

Rexroth IndraControl

Compact Flash Card Backup

Product Insert

R911332604
Edition 02

Introduction

This document describes the backup of the contents of a compact flash card. The card is included in the delivery of IndraControl L and IndraControl V devices. The following is described in this product insert: the backup, the backup recovery as well as the required hardware and software.



To successfully complete the data backup, the original data carrier type and the backup data carrier type have to match. Before starting to backup data, please verify if the type codes (manufacturer type) of the original data carrier and the backup data carrier match. If it is not possible to identify if the type codes match, please contact the Bosch Rexroth service department. If the original data carrier type and backup data carrier type do not match, the firmware is not working correctly anymore.

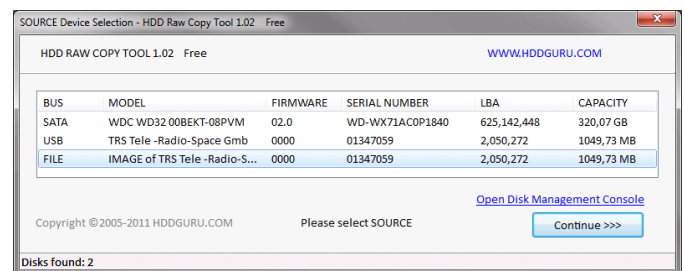
The software and hardware described in this product insert are not included in the delivery. The software and hardware described in this documentation has been tested by Bosch Rexroth. Bosch Rexroth does not guarantee the data integrity of the backup.

CAUTION

Uncontrolled motions due to a corrupt data copy

- ▶ Test the data integrity using a file comparison program after the backup has been completed.
- ▶ Carefully start-up the system after the compact flash card has been exchanged.

Used Software



HDD Raw Copy Tool 1.02

The HDD Raw Copy Tool is available as download under www.hddguru.com or in the Rexroth Automation Portal (IndraControl – Product Support – IndraControl_L – Downloads), direct link: <https://www.boschrexroth.com/irj/servlet/prt/portal/prtroot/com.sap.km.cm.docs/guid/70589783-aa46-3010-7794-dba3d33a6b64>.



The software is exclusively available for download as portable version in the Bosch Rexroth Automation Portal (see direct link above). The portable version is executed without installation.

Used Hardware

- ▶ Designation: SCM USB2.0 to PCMCIA ATA Adapter
 Manufacturer: SCM PC-Card GmbH
 Designation: ICS-235-ATA
 Part number: 910-0235-01



Adapter USB to PCMCIA

► PCMCIA compact flash card adapter



Adapter PCMCIA compact flash card

- Compact flash card adapter, alternative for laptops
Designation: Express Card Compact Flash (For CF 1/II, Microdrive, Magicstore. Express Card 34 mm)
Manufacturer: DeLOCK
Manufacturer number: 61771



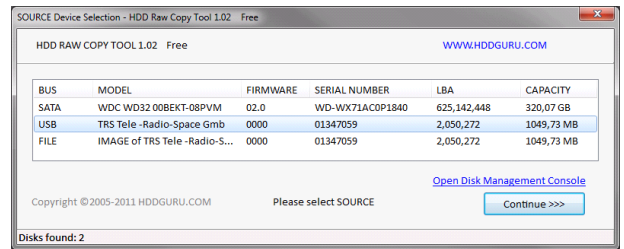
Adapter for compact flash cards for laptops



- For Lenovo T510 laptops, a compact flash card is not reliably detected if an adapter by DeLOCK is used. Start the scan "Scan for hardware changes" in the device manager. The compact flash card partitions are also displayed in the Explorer.
- For laptops using data carrier encryption, the SCM USB2.0 to PCMCIA ATA adapter is sporadically not detected by the HDD Raw Copy Tool. Check if the adapter is detected in the Windows 7 Disk Management. A compact flash card connected via an SCM USB2.0 to PCMCIA ATA adapter has to be detected and displayed in the Windows 7 Disk Management. If the compact flash card is displayed as "Unreadable", it is recommended to update the encryption software.

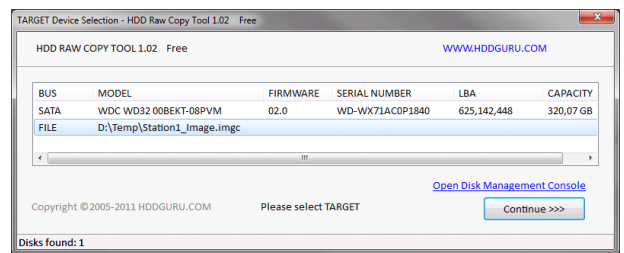
Data Backup

1. Start the "HDD Raw Copy Tool 1.02".
2. Select the source to be backed up (highlighted line).



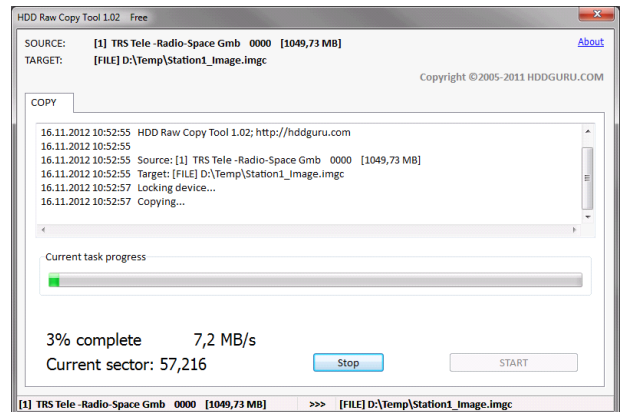
Selecting the source to be backed up

3. Select "Continue >>>>".
4. Select the file for data backup. Double-click on the selected line to enter the target directory. This file has the extension ".imgc" (compressed image)



Data backup target

5. Select "Continue >>>>".
6. Start the backup by clicking on "Start".



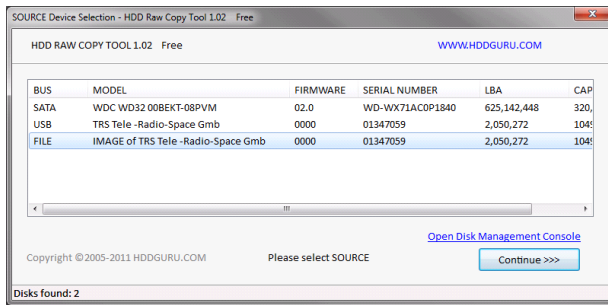
Starting the backup

The data backup can take several minutes.

7. Close the program once the backup has been completed.

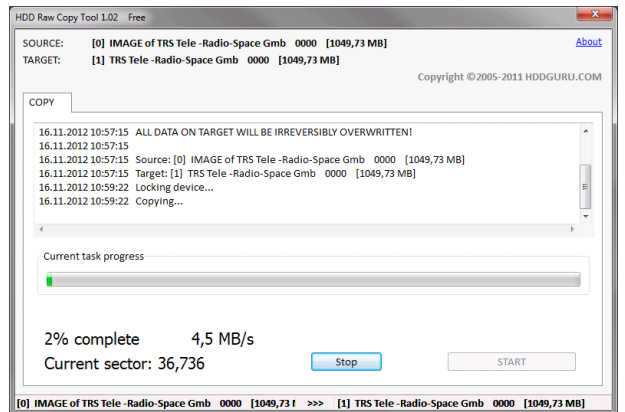
Data Recovery

1. Select the source.
2. To select a file of a previous backup, double-click on the highlighted line "FILE". Select the file from the window.

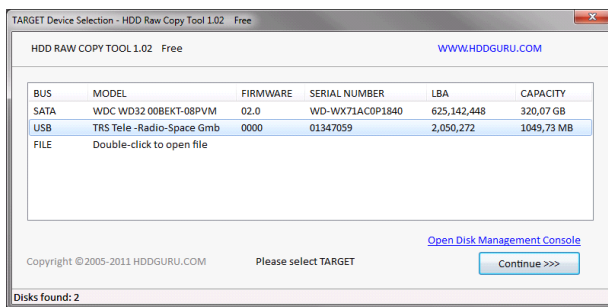


Selecting the backup

3. Select "Continue >>>".
4. Select the target directory (highlighted line).

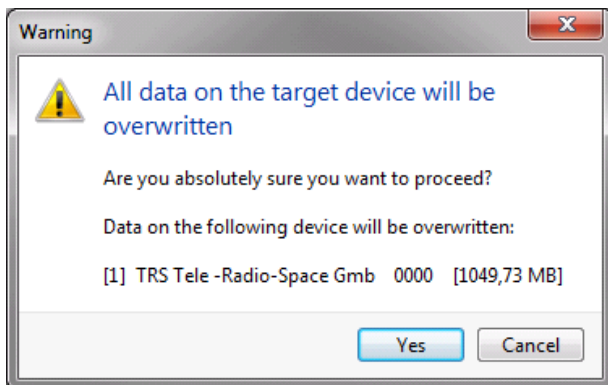


Starting the data recovery operation



Entering the target directory

5. Select "Continue >>>".
6. Start the data recovery by clicking on "Start".
7. Confirm overwriting of the target directory with "Yes".



Confirming overwriting of target directory

8. The data recovery operation starts.



Copyright

© Bosch Rexroth AG 2013

This document, as well as the data, specifications and other information set forth in it, are the exclusive property of Bosch Rexroth AG. It may not be reproduced or given to third parties without its consent.