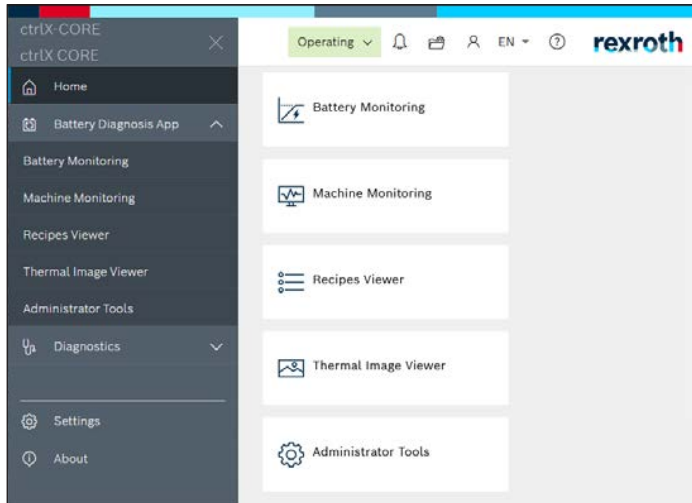


ctrlX battery recycling diagnosis app



- ▶ Safe and fast (deep) discharge of batteries down to 0 V
- ▶ Suitable for discharge of cells, modules, and battery packs
- ▶ Thermal diagnosis of batteries before, during, and after the discharge
- ▶ Monitored and controlled high-speed discharge and deactivation
- ▶ Control of deactivation by internal short circuit
- ▶ Diagnosis and monitoring of current and discharge curves during the discharge process
- ▶ Creation and management of discharge curves (recipes) incl. plausibility check
- ▶ Enables efficient partially and fully automated system concepts
- ▶ Control with open real-time Linux system for easy integration into other systems
- ▶ Fast measurement recording and control < 3 ms

The ctrlX battery recycling diagnosis app for the ctrlX CORE controller is part of the software for controlling and operating battery discharge systems. The ctrlX battery recycling diagnosis & discharge app is designed to run as a ctrlX app on a ctrlX CORE. The interface to the ctrlX data layer is used for data exchange with the Bosch Rexroth discharge software in the PLC app. The ctrlX battery recycling diagnosis & discharge app supports recognition and removal of overheated batteries as well as recipe management, visualization, and logging as part of the operation of a partially or fully automated battery

discharge system. Via the data layer interface, it provides the current temperature values of the batteries and their limit values. If a thermal imaging camera detects that the set temperature limit value has been exceeded, failure of the digital output signal is automatically triggered without delay. In addition to the app, other software modules are required to operate the system, including PLC modules and a WebIQ app.

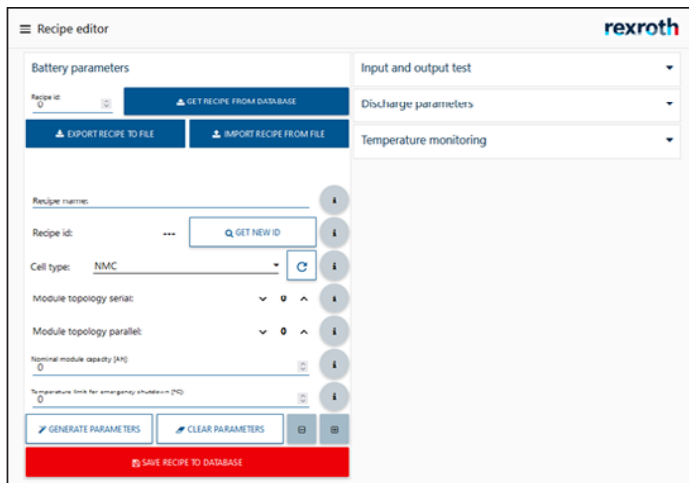
Ordering information

Product description	Material number
SOFTWARE LICENSE FOR BATTERY DIAG APP	3842573367

Required accessories

Product name		Material number
ctrlX CORE	COREX-C-X3-11-ANNN-21.01-01RS-NN-NNR	911405853
Smart supply 100 kW	XVR2-W0100ARN-01NETNNNNNN-S03RSN2NNNNNNN	R914506202
Mains connection module	XLI1-1R-W0100N-A-FA1100N-NNNN-NN	R911404351
Network bus cable	RKB0013/00.19	R911329741
DC/DC regulator 210 A	XMV2-W0210ANC-01AETNNNNNN-S03RSN2NNNPNNN	R911410497
Shield connection	XAS2-004-002-NN	R911393948
Smoothing capacitance	XLC1-W01M2-A-0750-NN	R911401169
DC throttle 210 A	XLL1-1WG401M0G-0210NNNNNN-NNNNNN	R911404259
Cy capacitors	HAS04.1-003-NNN-NN	R911369236
ctrlX I/O - Bus coupler PwrIn UL UP	XB-EC-12	R911406090
End holder	SUP-M01-ENDHALTER	R911170685
ctrlX I/O digital input module, 16 inputs	XI110116	R911406097
ctrlX I/O - 16Ch. Dig. output 24V/0.5A	XI211116	R911406102
ctrlX I/O - 4Ch. Ana. input 4-20mA 16-bit DIFF	XI342204	R911406107
ctrlX I/O - 4Ch. Ana. output 0-10V 16-bit BIPOLAR	XI412204	R911406116
SafeLogic compact, CPU module	SLC-3-CPU320302	R911173402
Memory connector for SLC-3-CPU3	SLC-3-MPL100301	R911173403
SafeLogic compact, digital I/O module (8 inputs, 4 outputs)	SLC-3-XTIO84302	R911172291
ctrlX HMI - Web panel	WR2115.1-11-AA-000-NN-A1-NN	R911411947

Recipe editor



Battery monitoring



The data specified within only serve to describe the product. As our products are constantly being further developed, no statements concerning a certain condition or suitability for a certain application can be derived from our information. The information given does not release the user from the obligation of own judgment and verification. It must be remembered that our products are subject to a natural process of wear and aging.