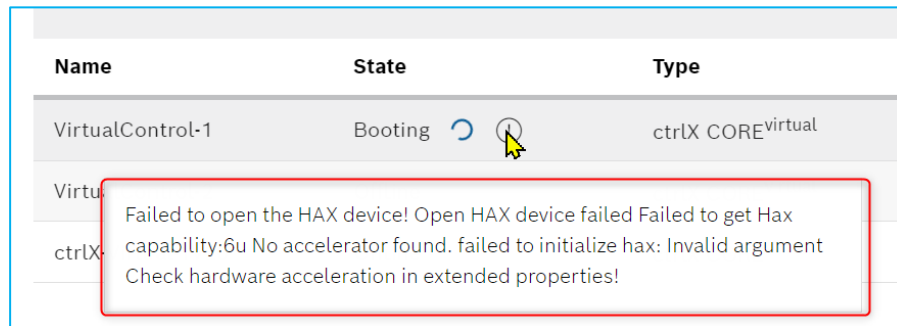


In ctrlX Works problems with starting a virtual CORE.(took about 5 minutes to start a virtual CORE!!) It gave next message.



Problem posted on the de community.

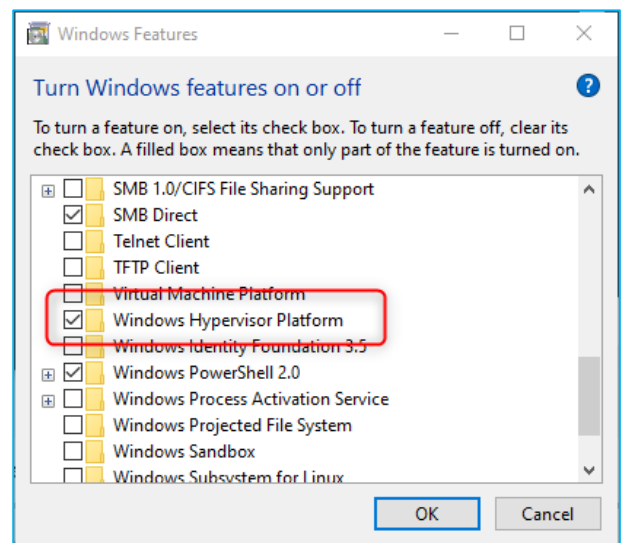
Solution:

Open “Command Prompt” and type: **optionalfeatures** , a list with Windows Features opens.

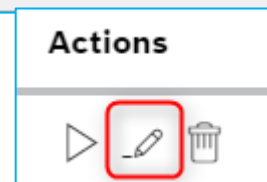
Check if “**Windows Hypervisor Platform**” is active. If not tag this and press OK.

The software part will be activated.

To be sure restart the computer.



Then open ctrlX Works and press on the pencil at the virtual CORE.



Then change in the folder “**Extended**” the “**Hardware acceleration**” to “**Windows Hypervisor Platform**” and save the changes.

I noticed that when I created a new virtual CORE the adjustment where taken over 😊

